

DREAMWORKS



A NETFLIX ORIGINAL SERIES



You will need:

- 3 sheets of cardboard
- Colored cardstock
- Pencil
- Scissors
- Double stick tape
- Glue
- Optional - elastic band or wooden craft stick

CREATE YOUR OWN LEGENDARY VOLTRON MASK



Cut out all template pieces and arrange them on cardboard sheets. Trace around the edges of the templates onto the cardboard. Cut out each mask piece and set aside.



Arrange template pieces on cardstock sheets. Trace around the edges of the templates onto the cardstock. Cut out each mask piece and set aside.



Apply glue to the back of each cardstock piece, and stick to the front of each matching cardboard piece. Match **A** to **A**, **B** to **B**, etc.



Place double stick tape on the back of **Pieces B through F**. Starting with **Piece A** as your base, position **Piece B** on top of **A**, then **C** on top of **B**, and so on.



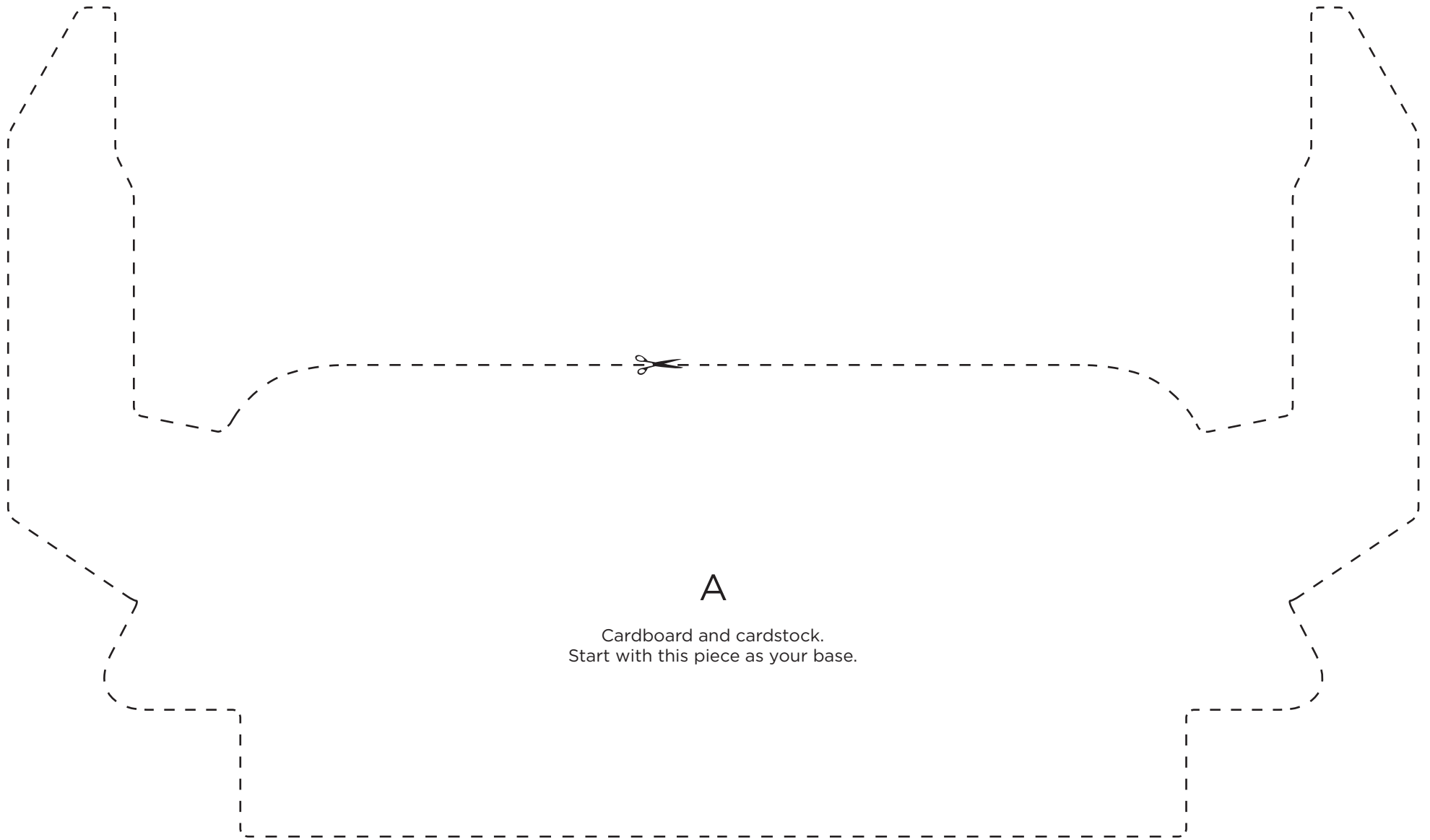
Staple an elastic band to the sides of the mask to wear it hands-free, or glue a wooden craft stick to the back center for a hand-held version.



TIP:

Choose cardstock colors that match Voltron's mask, or create your own unique color scheme!

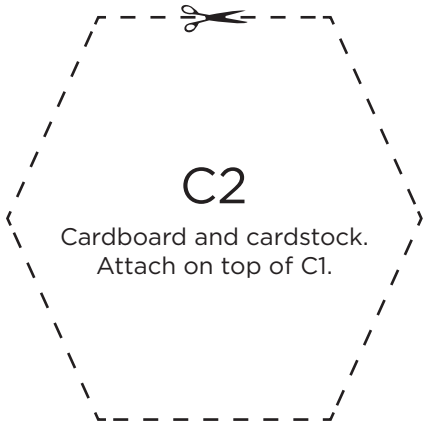
NETFLIX | NEW EPISODES
JANUARY 20



A

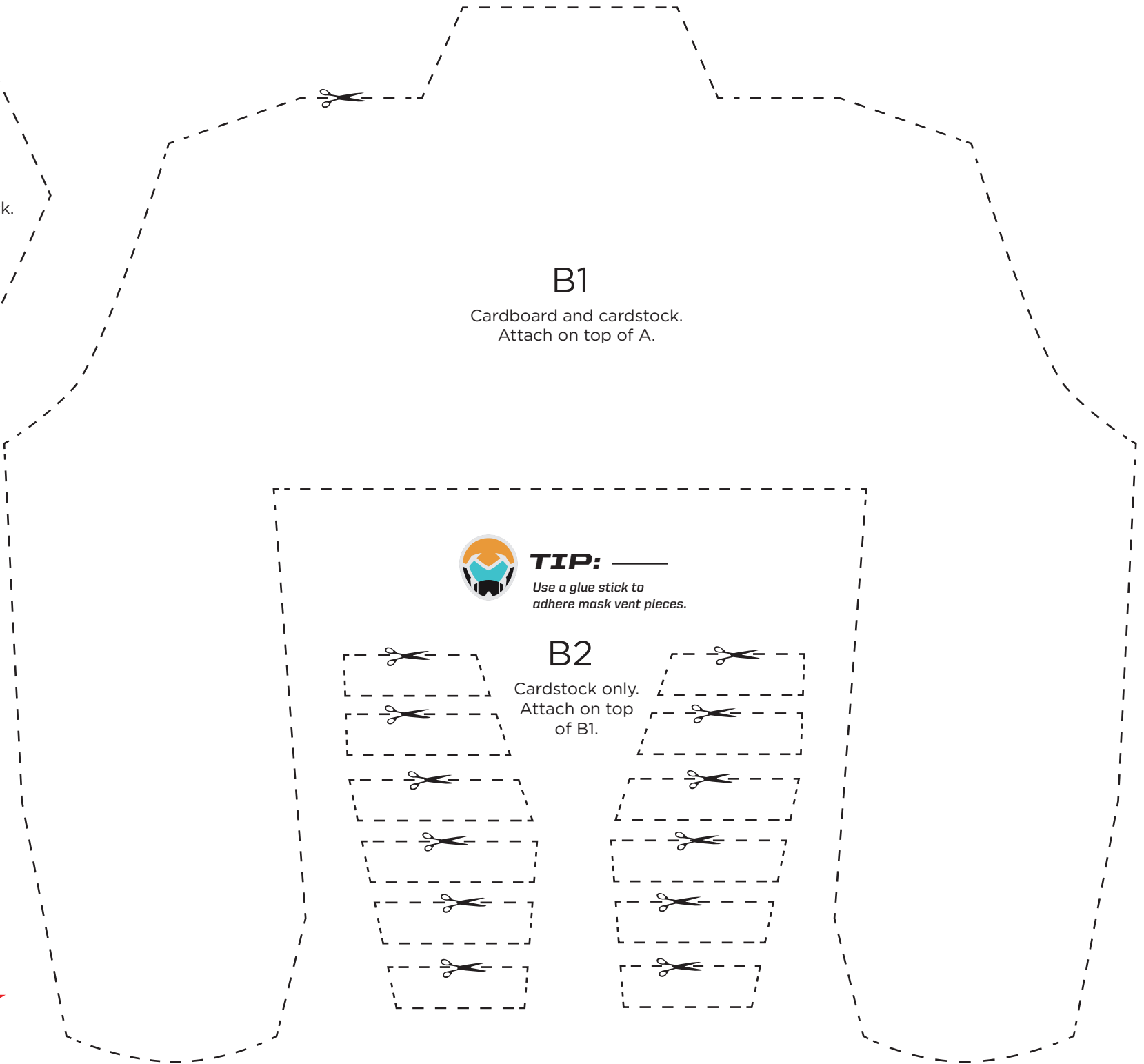
Cardboard and cardstock.
Start with this piece as your base.





C2

Cardboard and cardstock.
Attach on top of C1.

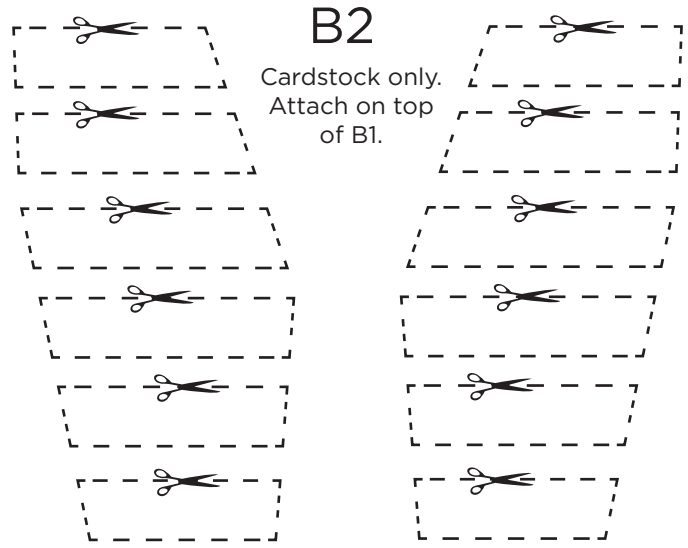


B1

Cardboard and cardstock.
Attach on top of A.

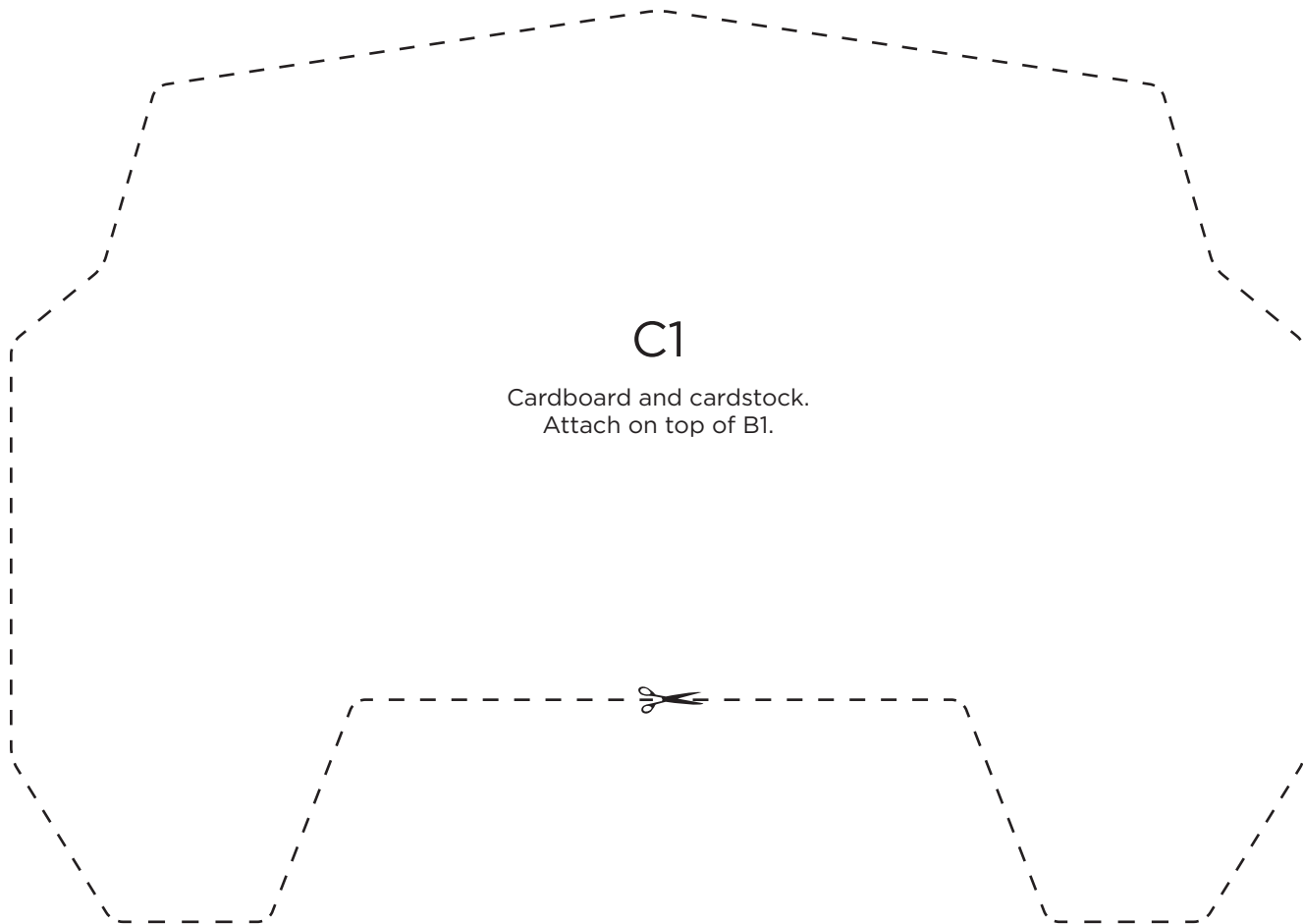


TIP: —
Use a glue stick to
adhere mask vent pieces.



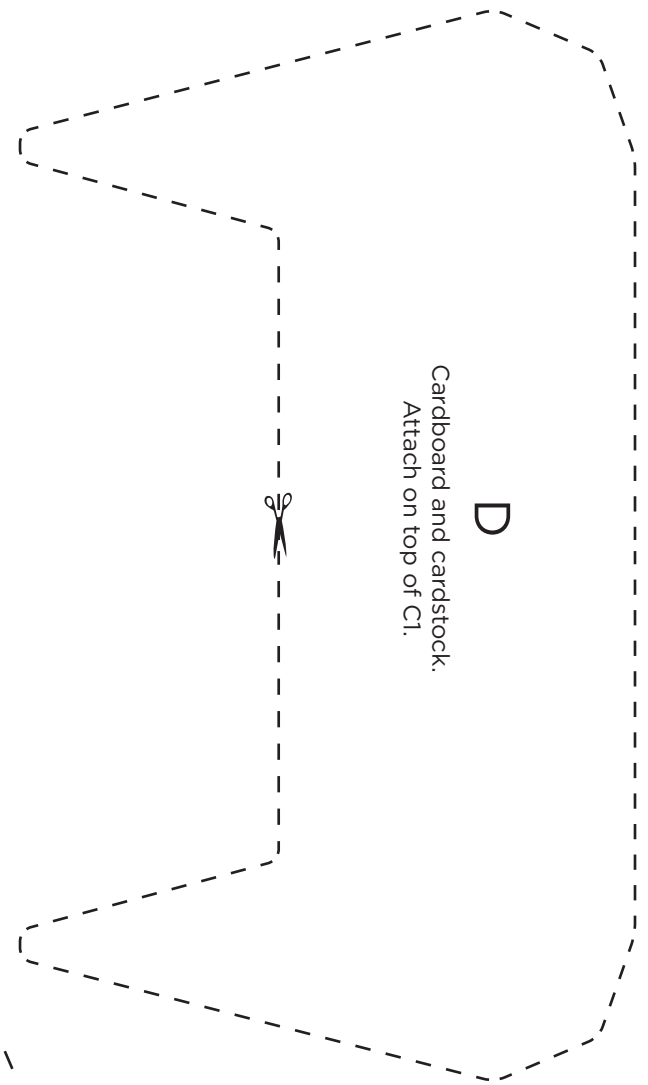
B2

Cardstock only.
Attach on top
of B1.



C1

Cardboard and cardstock.
Attach on top of B1.



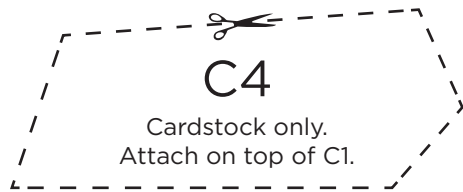
D

Cardboard and cardstock.
Attach on top of C1.



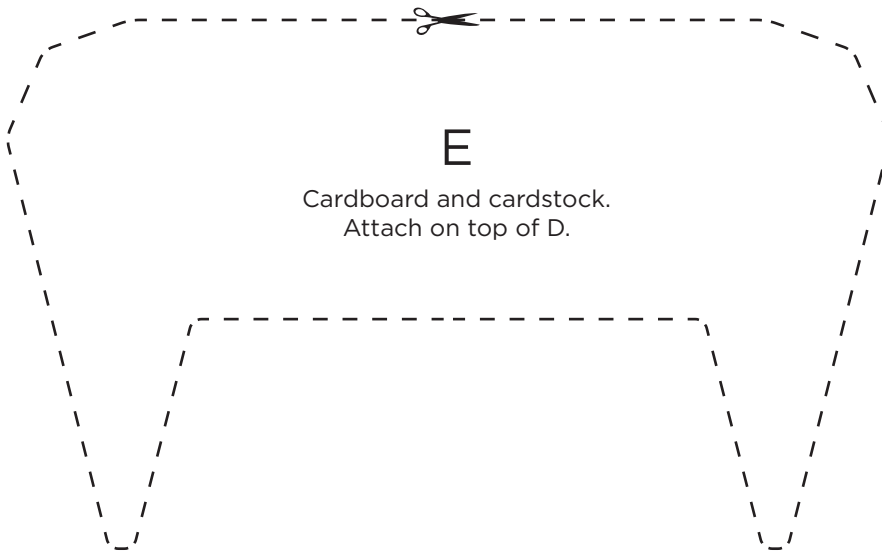
C3

Cardstock only.
Attach on top of C1.



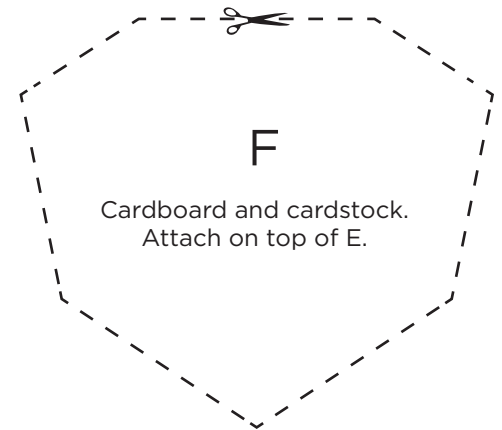
C4

Cardstock only.
Attach on top of C1.



E

Cardboard and cardstock.
Attach on top of D.



F

Cardboard and cardstock.
Attach on top of E.



DREAMWORKS



A NETFLIX ORIGINAL SERIES

CREATE YOUR OWN LEGENDARY VOLTRON SWORD



Cut out all template pieces and arrange them on cardboard sheets. Trace around the edges of the templates onto the cardboard. Cut out each sword piece and set aside.



Arrange template pieces on cardstock sheets. Trace around the edges of the templates onto the cardstock. Cut out each sword piece and set aside.



Apply glue to the back of each cardstock piece, and stick to the front of each matching cardboard piece. Match **A** to **A**, **B** to **B**, etc.



Place double stick tape on the back of **Pieces B through F**. Starting with **Piece A** as your base, position **Piece B** on top of **A**, then **C** on top of **B**, and so on.

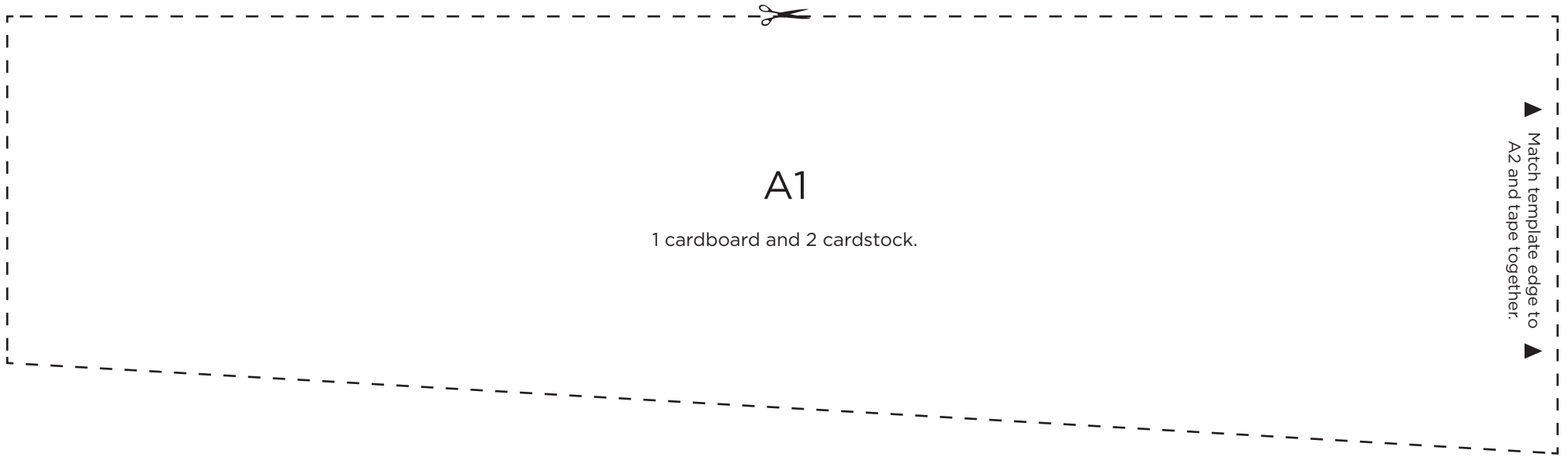


Repeat step 4 to cover the reverse side of your sword.

You will need:

- Cardboard
- Colored cardstock
- Pencil
- Scissors
- Double stick tape
- Glue

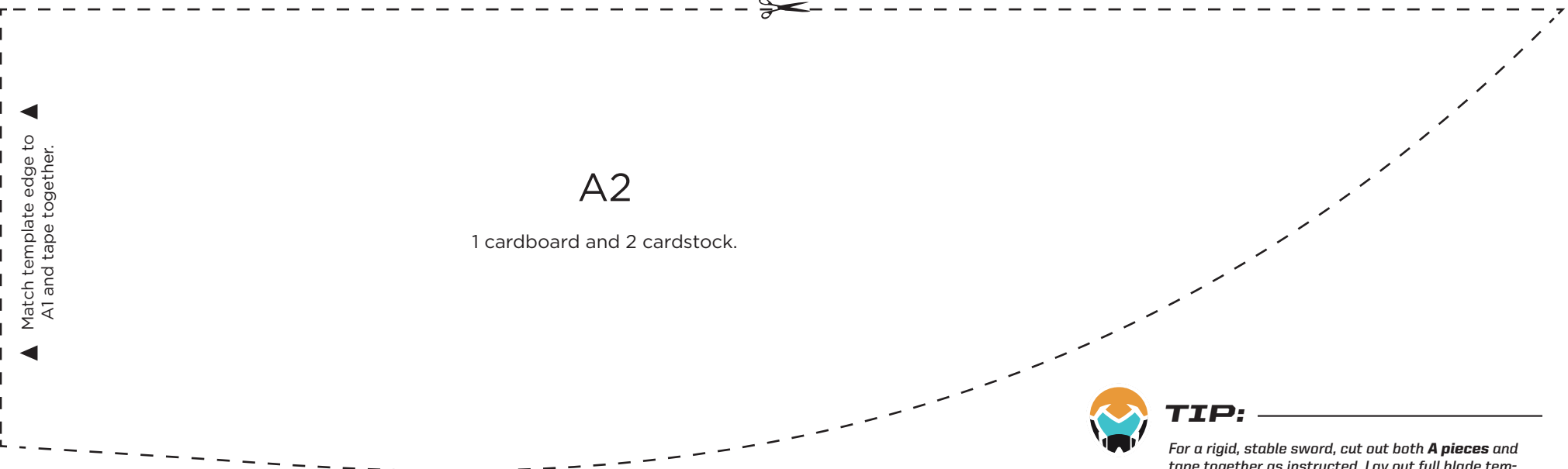
NETFLIX | NEW EPISODES
JANUARY 20



A1

1 cardboard and 2 cardstock.

▲ Match template edge to A2 and tape together. ▲



A2

1 cardboard and 2 cardstock.

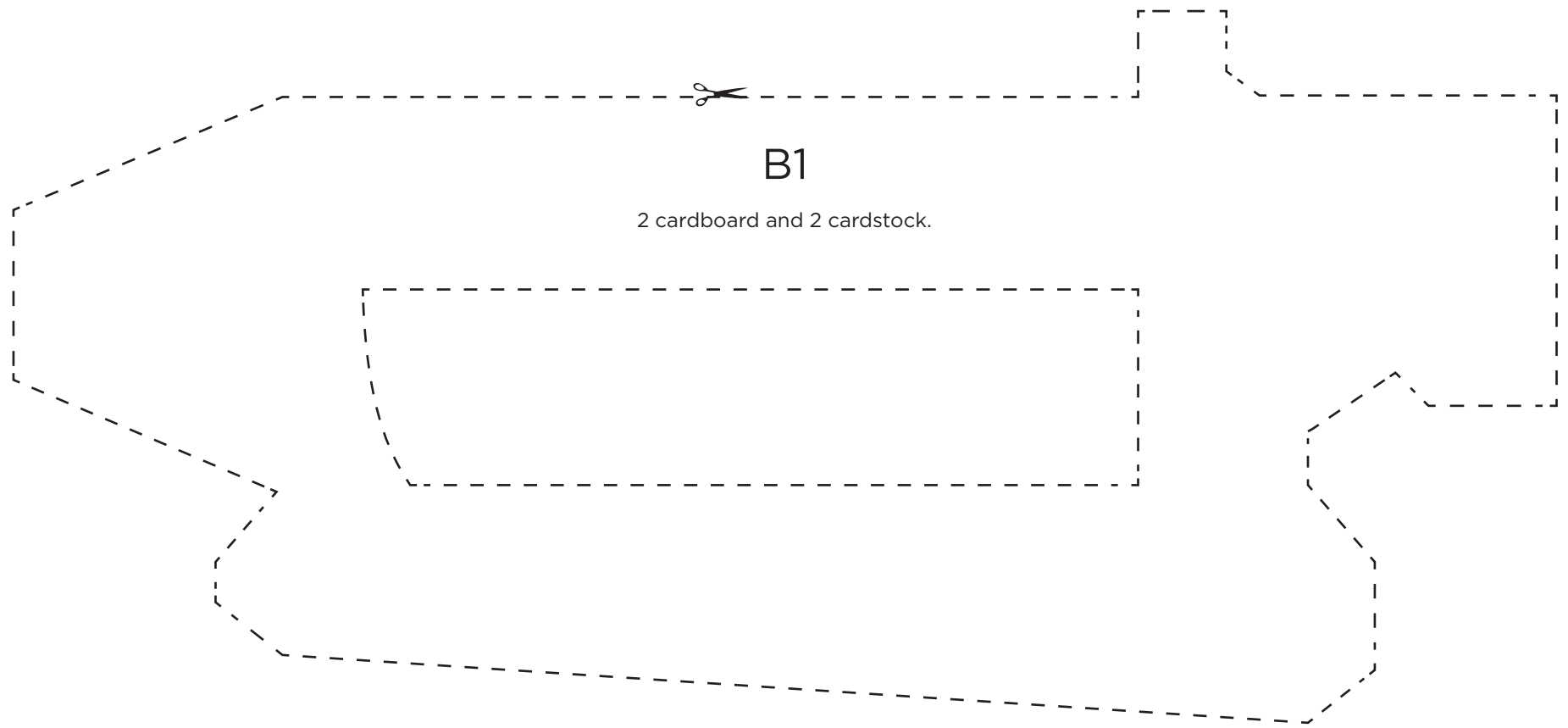
▲ Match template edge to A1 and tape together. ▲



TIP: _____

*For a rigid, stable sword, cut out both **A pieces** and tape together as instructed. Lay out full blade template on one long sheet of cardboard, trace template and cut out as one continuous piece.*

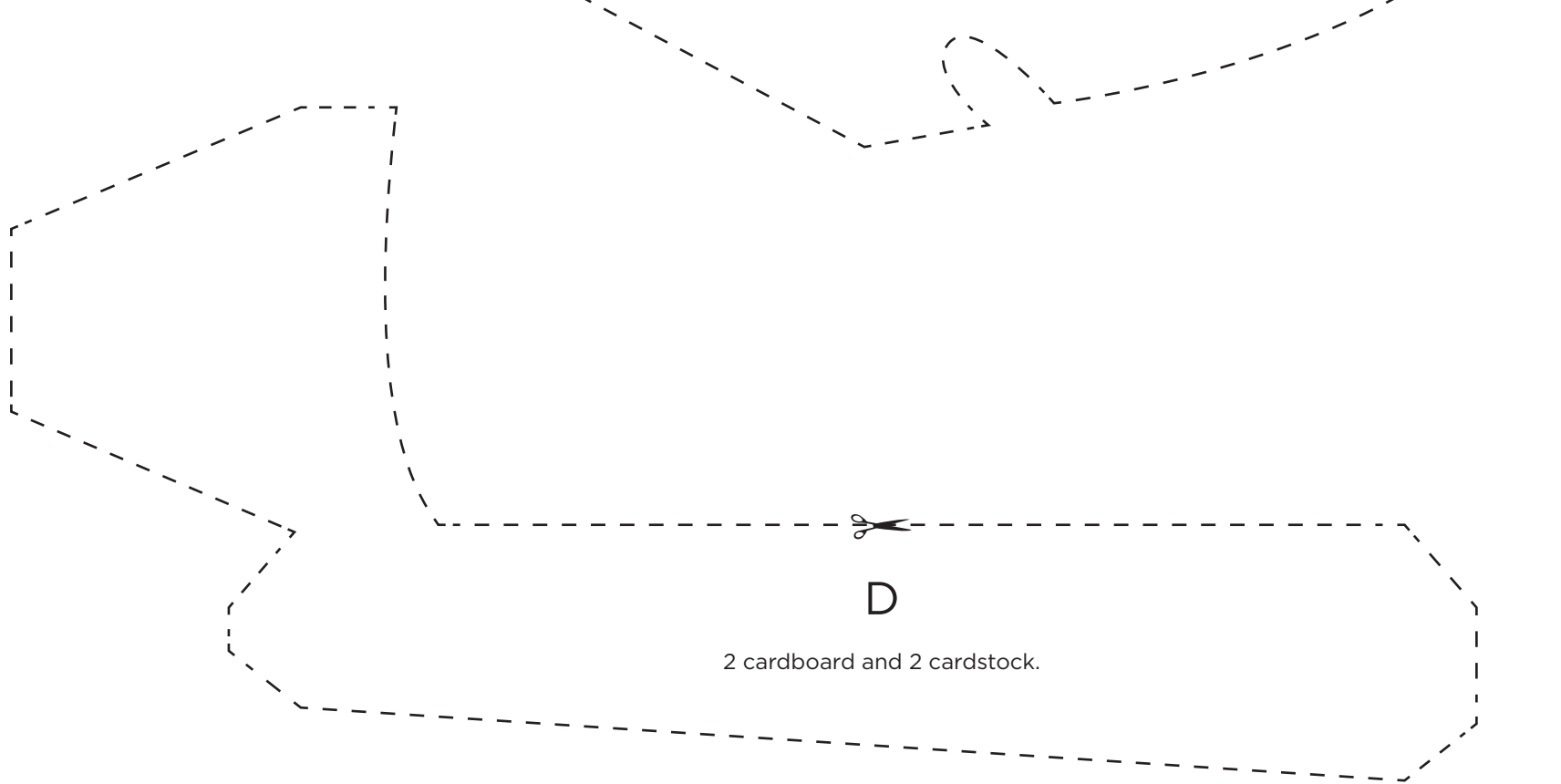
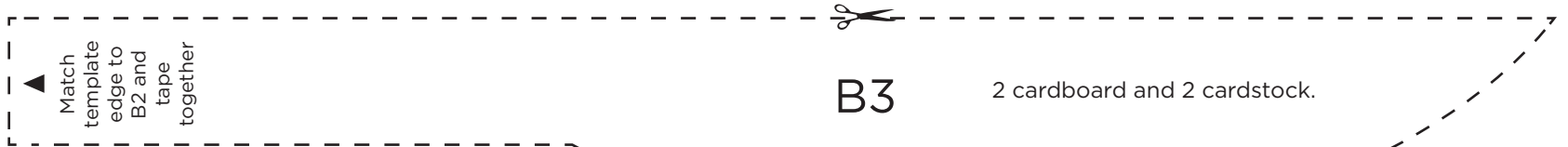
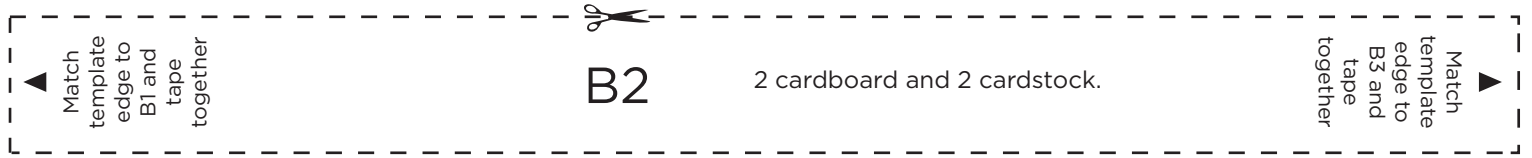
To make your sword 2-sided, you will need to cover both sides with cardstock.

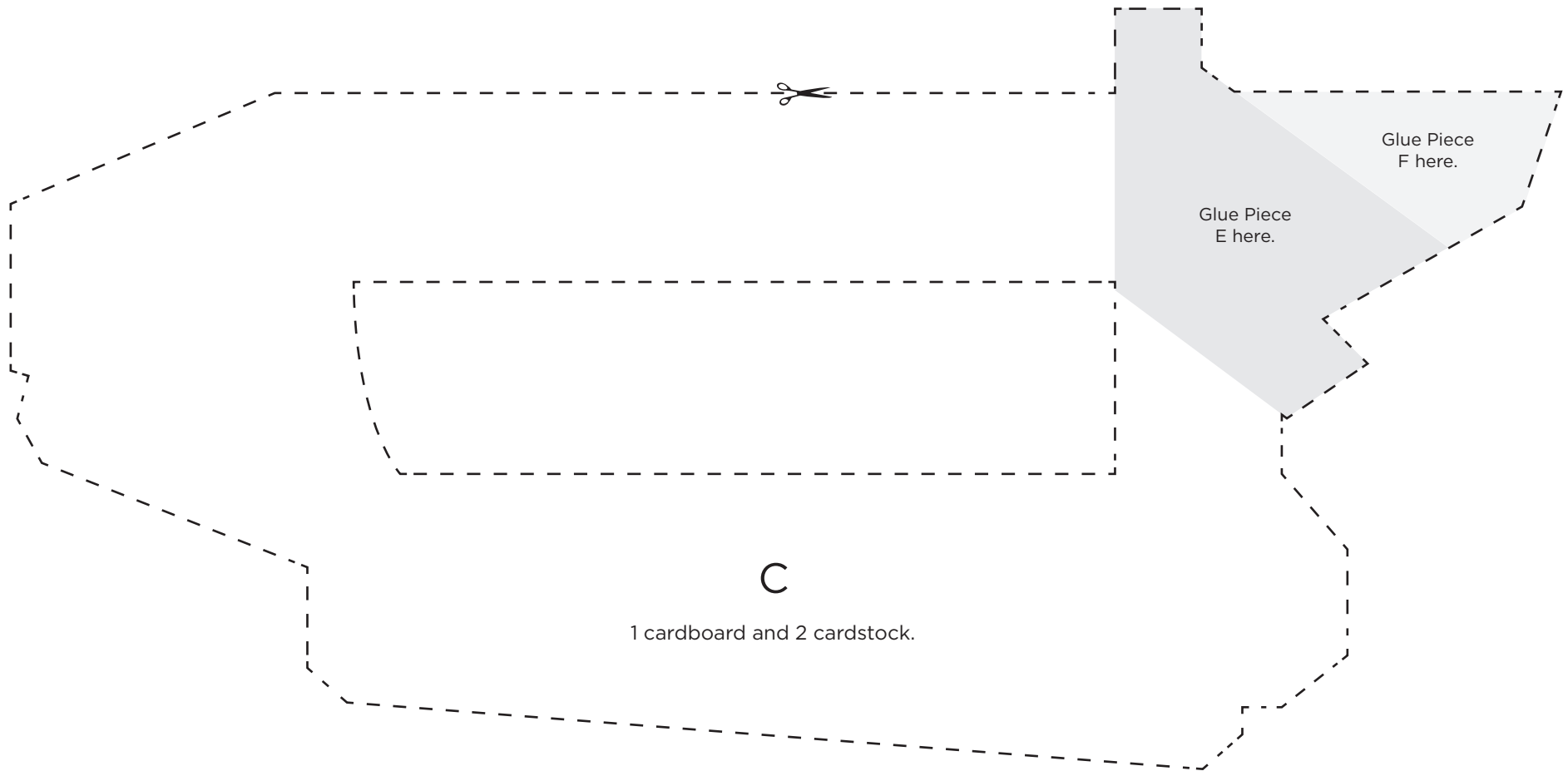


B1

2 cardboard and 2 cardstock.

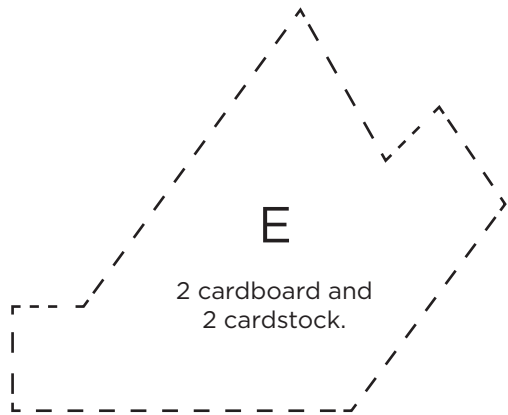






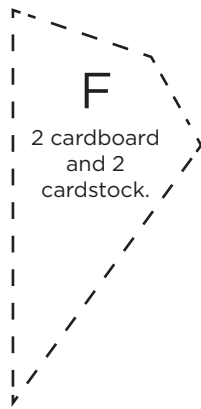
C

1 cardboard and 2 cardstock.



E

2 cardboard and 2 cardstock.



F

2 cardboard and 2 cardstock.

